

SCALE 1:500

**LEGEND**

**TREE CONDITION CATEGORIES**

- A TREES OF HIGH VALUE AND QUALITY
- B TREES OF MODERATE VALUE AND QUALITY
- C TREES OF LOW QUALITY AND VALUE
- C TREES OF LOW QUALITY AND VALUE

**TREE CONSTRAINTS**

- TREE CONSTRAINTS

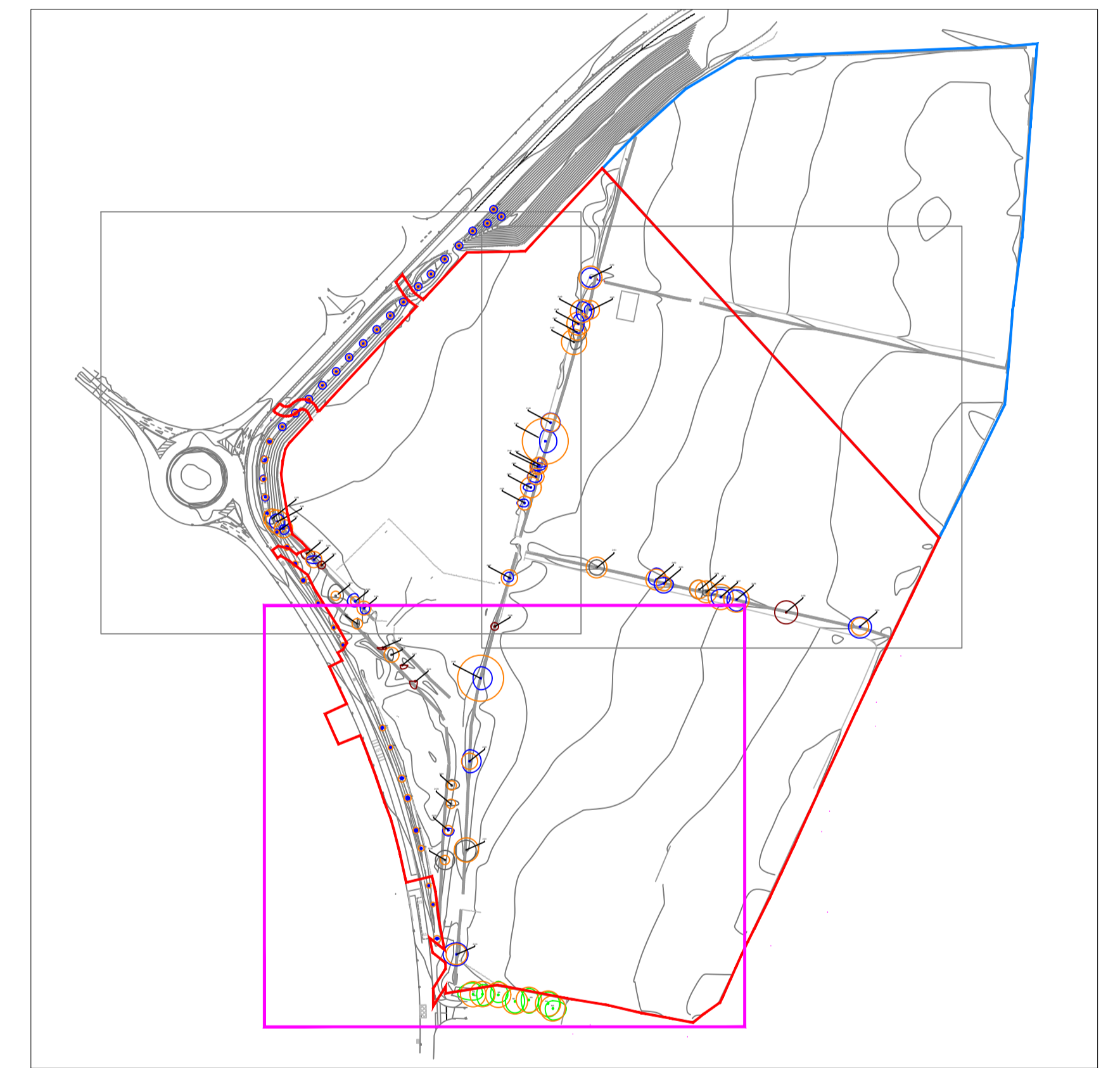
**APPLICATION BOUNDARY**

- APPLICATION BOUNDARY

Trees are in approximate locations only. Exact locations may need to be ascertained if the trees are to be retained.

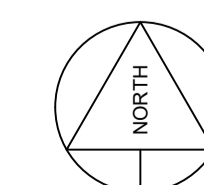
Drawing to be interpreted with reference to Tree Survey document

Tree constraints shown are calculated from guidelines contained within BS5837 (2012) within dimensions contained within Section 5 of the Tree Survey document. This outline should not be interpreted as the exact extent of root spread however it is considered the optimal area to be retained free of developmental impacts. Natural and/or man made barriers such as waterlogged soil or buildings may restrict the spread of tree roots. Crown spreads may also prove to be a constraint particularly where crown reduction may not be possible. The constraints lines shown on this drawing are therefore a guide only. An on-site assessment should be undertaken in the event of any developments being planned within the areas shown for retained trees.



SCALE 1:2,500

REV	DATE	DESCRIPTIONS
A	09,12,19	TREE #2119 MOVED



		CLIENT:	PROJECT:	JOB NO.:
		ARDSTONE HOMES	PROPOSED DEVELOPMENT AT CRODAUN, CO. KILDARE	TCRO001
<small>NOTES</small> <small>Do Not Scale. Use Figured Dimensions Only.</small> <small>Not for Construction. Prepare written Specifications Manual.</small> <small>© THIS DRAWING IS COPYRIGHT OF CMK HORTICULTURE &amp; ARBORICULTURE</small>	DRAWING:	DATE:	SCALE:	DRAWING NO.:
	Tree Survey & Constraints	09-12-19	AS SHOWN	101
	DRAWN BY:	CK	REVISION:	
Claran Keating	INITIALS	A		
STATUS: Planning				