

SCALE 1:500

LEGEND

TREE CONDITION CATEGORIES

- A TREES OF HIGH VALUE AND QUALITY
- B TREES OF MODERATE VALUE AND QUALITY
- C TREES OF LOW QUALITY AND VALUE
- C TREES OF LOW QUALITY AND VALUE

TREE CONSTRAINTS

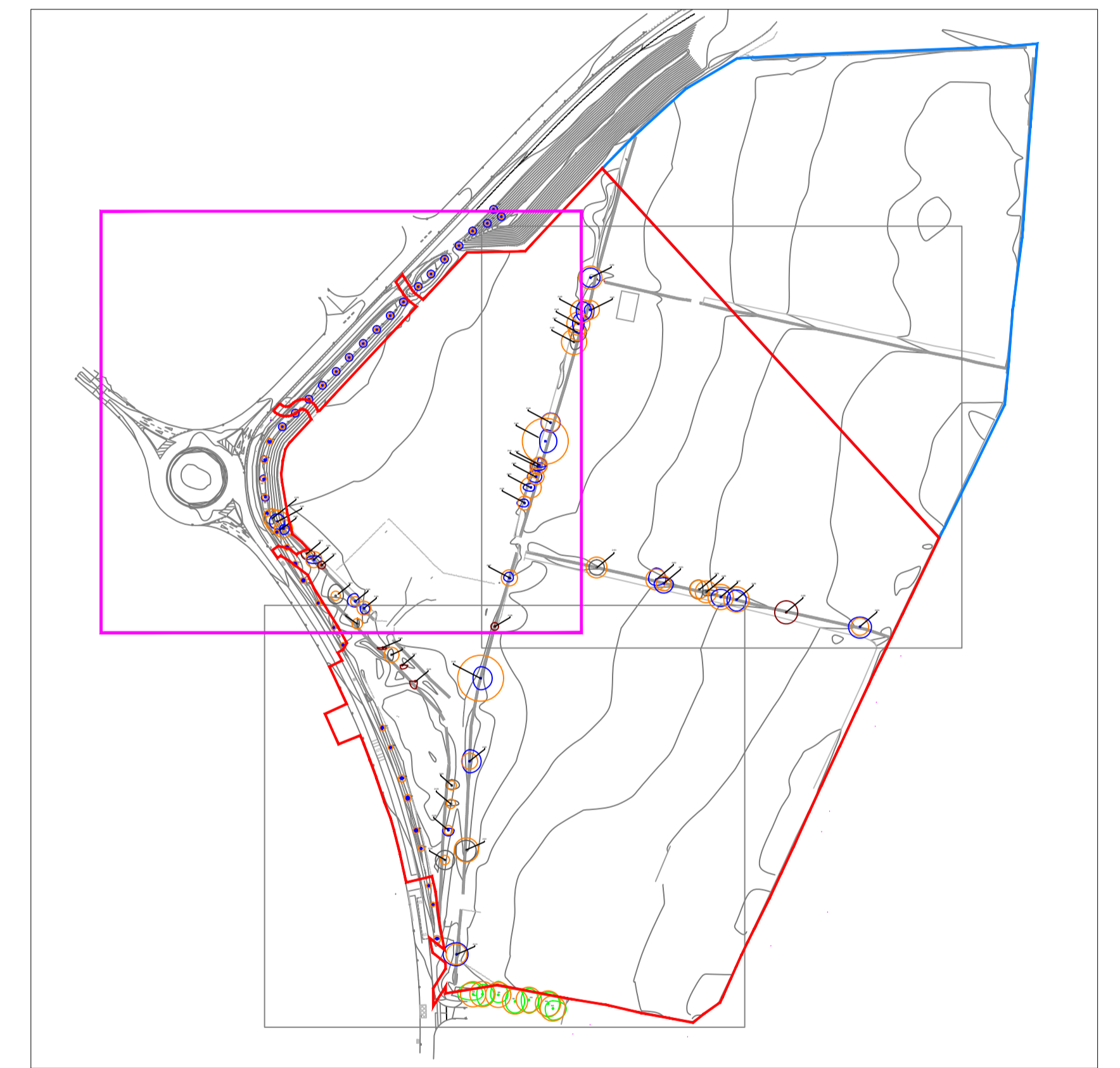
-

APPLICATION BOUNDARY

Trees are in approximate locations only. Exact locations may need to be ascertained if the trees are to be retained.

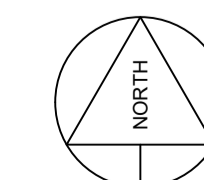
Drawing to be interpreted with reference to Tree Survey document

Tree constraints shown are calculated from guidelines contained within BS5837 (2012) within dimensions contained within Section 5 of the Tree Survey document. This outline should not be interpreted as the exact extent of root spread however it is considered the optimal area to be retained free of developmental impacts. Natural and/or man made barriers such as waterlogged soil or buildings may restrict the spread of tree roots. Crown spreads may also prove to be a constraint particularly where crown reduction may not be possible. The constraints lines shown on this drawing are therefore a guide only. An on-site assessment should be undertaken in the event of any developments being planned within the areas shown for retained trees.



SCALE 1:2,500

REV	DATE	DESCRIPTIONS
A	09,12,19	TREE #2119 MOVED



CMK <small>Consultants in Architecture & Planning Ltd.</small>		CLIENT: ARDSTONE HOMES		PROJECT: PROPOSED DEVELOPMENT AT CRODAUN, CO. KILDARE		JOB NO.: TCR0001	
DRAWING: Tree Survey & Constraints		DATE: 09-10-19		SCALE: AS SHOWN		DRAWING NO.: 102	
DRAWN BY: Claran Keating		CK: INITIALS		REVISION: A			
STATUS: Planning							

NOTES: Do Not Scale. Use Figured Dimensions Only. Not for Construction. Prepare with Specifics Noted. © THIS DRAWING IS COPYRIGHT OF CMK HORTICULTURE & ARBORICULTURE